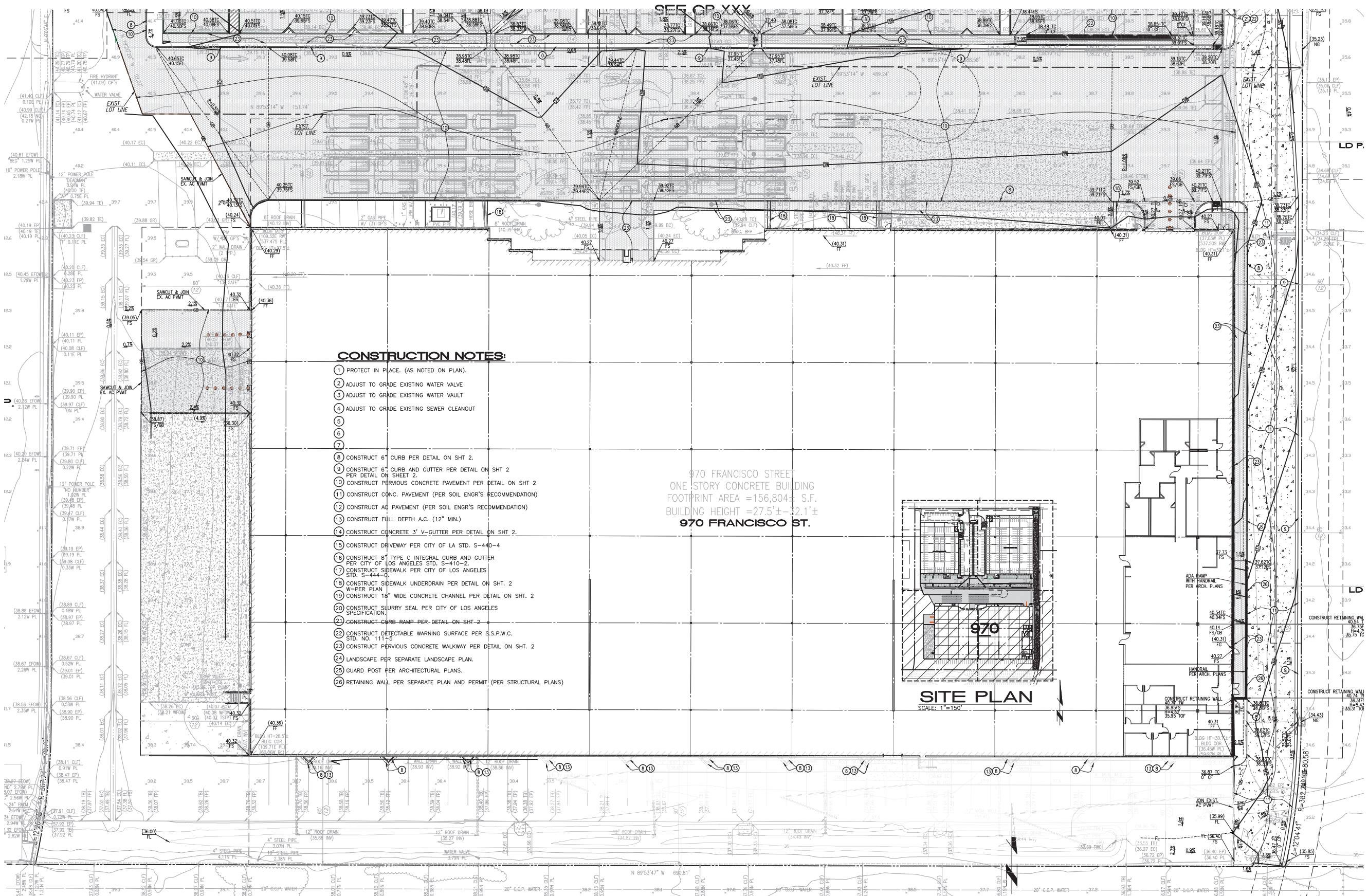


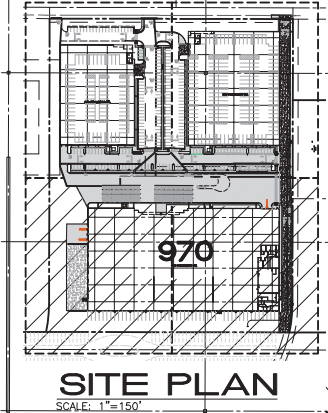
SEE CP XXX



CONSTRUCTION NOTES:

- 1 PROTECT IN PLACE. (AS NOTED ON PLAN).
2 ADJUST TO GRADE EXISTING WATER VALVE
3 ADJUST TO GRADE EXISTING WATER VAULT
4 ADJUST TO GRADE EXISTING SEWER CLEANOUT
5
6
7
8 CONSTRUCT 6" CURB PER DETAIL ON SHT. 2.
9 CONSTRUCT 6" CURB AND GUTTER PER DETAIL ON SHT. 2 PER DETAIL ON SHEET 2.
10 CONSTRUCT PERVIOUS CONCRETE PAVEMENT PER DETAIL ON SHT. 2
11 CONSTRUCT CONC. PAVEMENT (PER SOIL ENGR'S RECOMMENDATION)
12 CONSTRUCT AC PAVEMENT (PER SOIL ENGR'S RECOMMENDATION)
13 CONSTRUCT FULL DEPTH A.C. (12" MIN.)
14 CONSTRUCT CONCRETE 3" V-GUTTER PER DETAIL ON SHT. 2.
15 CONSTRUCT DRIVEWAY PER CITY OF LA STD. S-440-4
16 CONSTRUCT 8" TYPE C INTEGRAL CURB AND GUTTER PER CITY OF LOS ANGELES STD. S-410-2.
17 CONSTRUCT SIDEWALK PER CITY OF LOS ANGELES STD. S-444-0
18 CONSTRUCT SIDEWALK UNDERDRAIN PER DETAIL ON SHT. 2 W=PER PLAN
19 CONSTRUCT 18" WIDE CONCRETE CHANNEL PER DETAIL ON SHT. 2
20 CONSTRUCT SLURRY SEAL PER CITY OF LOS ANGELES SPECIFICATION.
21 CONSTRUCT CURB RAMP PER DETAIL ON SHT. 2
22 CONSTRUCT DETECTABLE WARNING SURFACE PER S.S.P.W.C.
23 CONSTRUCT PERVIOUS CONCRETE WALKWAY PER DETAIL ON SHT. 2
24 LANDSCAPE PER SEPARATE LANDSCAPE PLAN.
25 GUARD POST PER ARCHITECTURAL PLANS.
26 RETAINING WALL PER SEPARATE PLAN AND PERMIT. (PER STRUCTURAL PLANS)

970 FRANCISCO STREET
ONE STORY CONCRETE BUILDING
FOOTPRINT AREA =156,804± S.F.
BUILDING HEIGHT =27.5'±-32.1'±
970 FRANCISCO ST.



Know what's below. Call before you dig.

SEE SHEET 6

BENCHMARK: CITY OF LOS ANGELES BENCHMARK NO. "21-02291" LEAD AND TAG IN SOUTHEAST CURB RETURN KNOX STREET AND NORMANDIE AVENUE; 13.0 FEET NORTH OF BCR SOUTH OF KNOX STREET. ELEVATION = 49.76 FEET (NAVD '88 / 2014 ADJ.)

Table with columns: REV., DESCRIPTION, DATE, APPR'D.



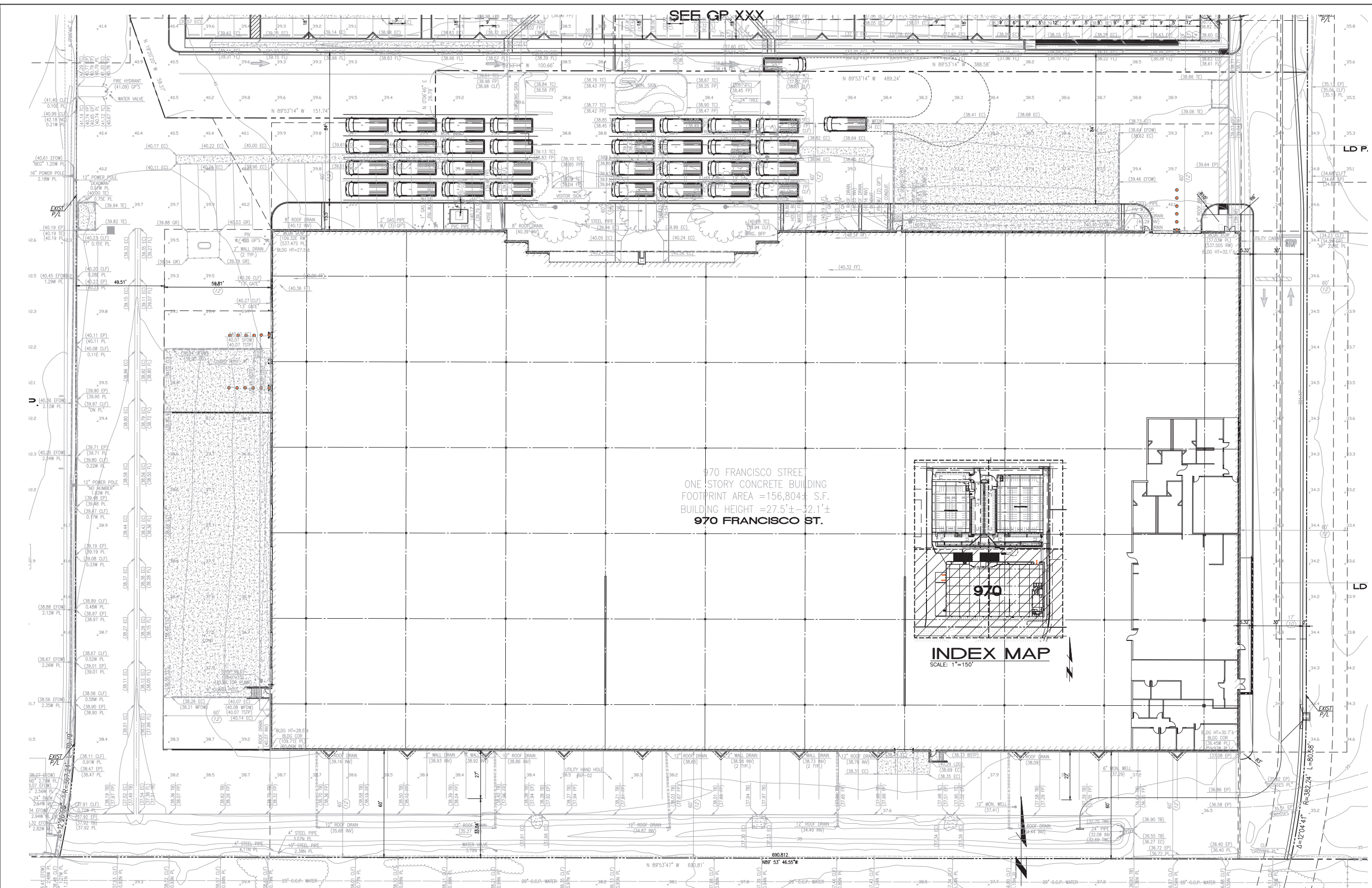
PLANS PREPARED UNDER THE SUPERVISION OF: Reinhard Stenzel, R.C.E. 56155 - EXP. 12-31-20

ENGINEER: Thiens Engineering, Inc. CIVIL ENGINEERS & LAND SURVEYING 14349 FIRESTONE BOULEVARD LA MIRADA, CALIFORNIA 90638

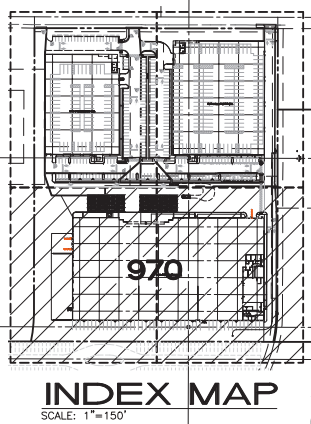
OWNER: COGNAC PACIFIC GATEWAY LLC 19701 S. VERMONT AVE TORRANCE, CA 90502

CITY OF LOS ANGELES GRADING PLAN FOR AMAZON DCX7 TORRANCE 970 FRANCISCO STREET LOS ANGELES SHEET 4 OF 7 T.E. JOB No. 3852

SEE GP. XXX



970 FRANCISCO STREET
 ONE STORY CONCRETE BUILDING
 FOOTPRINT AREA =156,804± S.F.
 BUILDING HEIGHT =27.5'±-32.1'±
 970 FRANCISCO ST.



SCALE: 1"=20'



Know what's below.
 Call before you dig.

SEE SHEET 6

BENCHMARK:
 CITY OF LOS ANGELES BENCHMARK NO. "21-02291"
 LEAD AND TAG IN SOUTHEAST CURB RETURN KNOX STREET AND
 NORMANDIE AVENUE; 13.0 FEET NORTH OF BCR SOUTH OF KNOX STREET
 ELEVATION = 49.76 FEET (NAVD '88 / 2014 ADJ.)

SOILS ENGINEER:

REV.	DESCRIPTION	DATE	APPR'D.



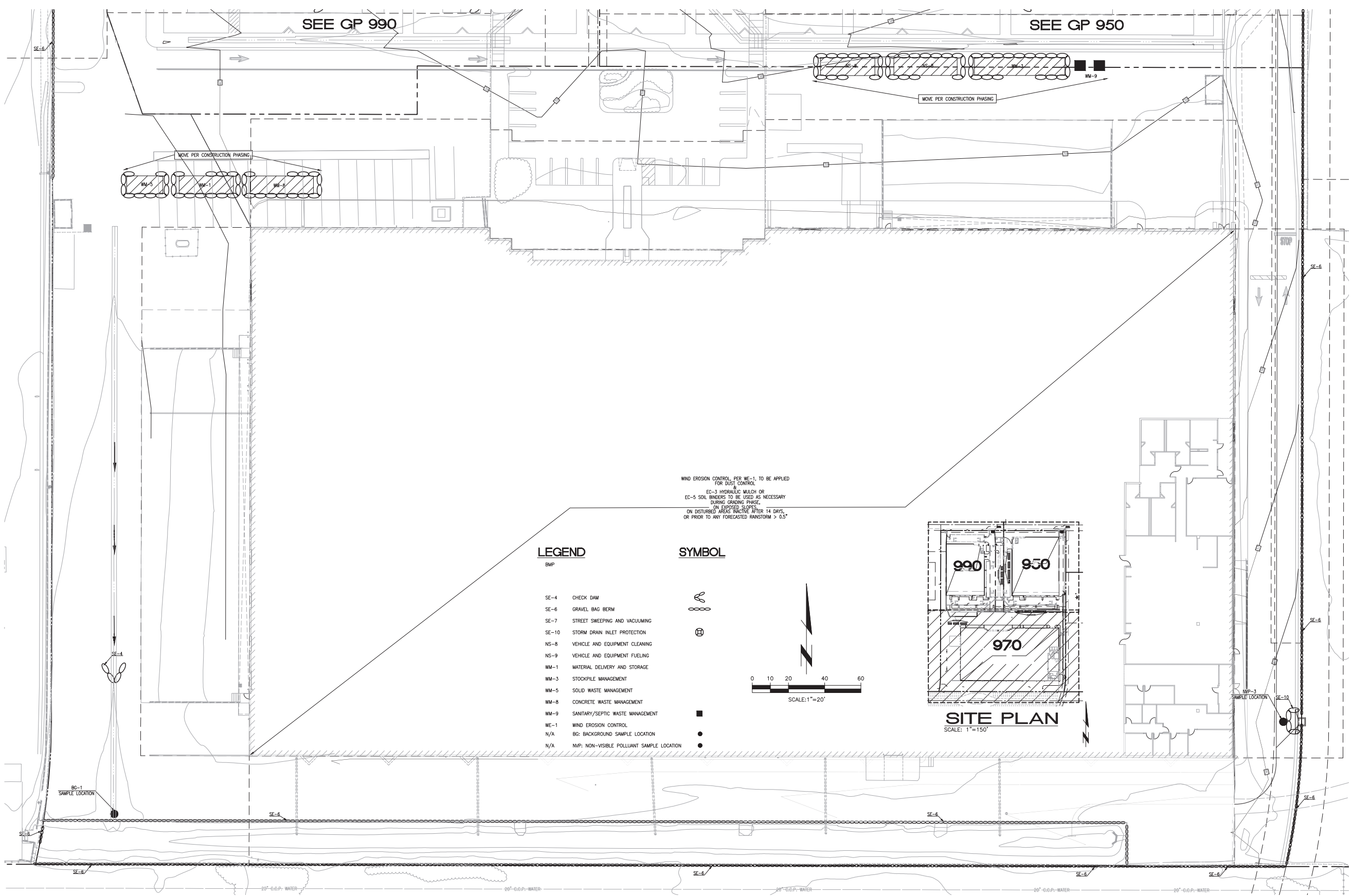
PLANS PREPARED UNDER
 THE SUPERVISION OF:
Reinhard Stenzel
 REINHARD STENZEL
 R.C.E. 56155 - EXP. 12-31-20

ENGINEER:
Thienes Engineering, Inc.
 CIVIL ENGINEERING & LAND SURVEYING
 14349 FIRESTONE BOULEVARD
 LA MIRADA, CALIFORNIA 90638
 PH: (714) 521-4811 FAX: (714) 521-4113

OWNER:
COGNAC PACIFIC GATEWAY LLC
 19701 S. VERMONT AVE
 TORRANCE, CA 90502

CITY OF LOS ANGELES
DIMENSIONAL PLAN
 FOR
AMAZON DCX7 TORRANCE
 970 FRANCISCO STREET
 LOS ANGELES

SHEET
5
 OF
7
 T.E. JOB No. 3852

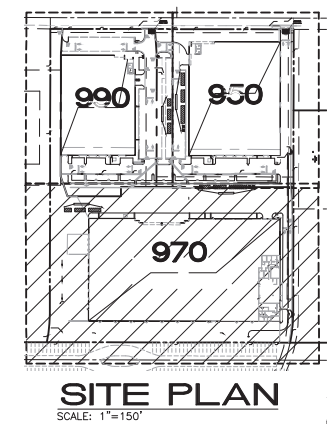
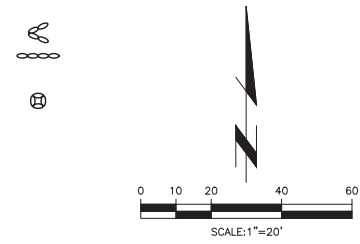


WIND EROSION CONTROL, PER WE-1, TO BE APPLIED FOR DUST CONTROL.
 EC-3 HYDRAULIC MULCH OR EC-5 SOIL BINDERS TO BE USED AS NECESSARY DURING GRADING PHASE, ON EXPOSED SURFACES ON DISTURBED AREAS INACTIVE AFTER 14 DAYS, OR PRIOR TO ANY FORECASTED RAINSTORM > 0.5"

LEGEND

- BMP
- SE-4 CHECK DAM
 - SE-6 GRAVEL BAG BERM
 - SE-7 STREET SWEEPING AND VACUUMING
 - SE-10 STORM DRAIN INLET PROTECTION
 - NS-8 VEHICLE AND EQUIPMENT CLEANING
 - NS-9 VEHICLE AND EQUIPMENT FUELING
 - WM-1 MATERIAL DELIVERY AND STORAGE
 - WM-3 STOCKPILE MANAGEMENT
 - WM-5 SOLID WASTE MANAGEMENT
 - WM-8 CONCRETE WASTE MANAGEMENT
 - WM-9 SANITARY/SEPTIC WASTE MANAGEMENT
 - WE-1 WIND EROSION CONTROL
 - N/A BG: BACKGROUND SAMPLE LOCATION
 - N/A NVP: NON-VISIBLE POLLUTANT SAMPLE LOCATION

SYMBOL



Know what's below.
Call before you dig.

BENCHMARK:
 CITY OF LOS ANGELES BENCHMARK NO. "21-02291"
 LEAD AND TAG IN SOUTHEAST CURB RETURN KNOX STREET AND
 NORMANDIE AVENUE, 13.0 FEET NORTH OF BCR SOUTH OF KNOX STREET
 ELEVATION = 49.776 FEET (NAVD '88 / 2014 ADJ.)

SOILS ENGINEER:

REV.	DESCRIPTION	DATE	APPR'D.



PLANS PREPARED UNDER THE SUPERVISION OF:
Reinhard Stenzel
 R.C.E. 56155 - EXP. 12-31-20

ENGINEER:
Thienes Engineering, Inc.
 CIVIL ENGINEERING & LAND SURVEYING
 14349 FIRESTONE BOULEVARD
 LA MIRADA, CALIFORNIA 90638
 PH: (714) 521-4811 FAX: (714) 521-4173

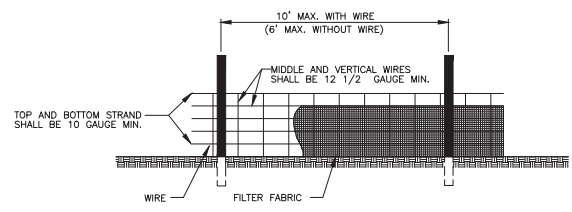
OWNER:
COGNAC PACIFIC GATEWAY LLC
 19701 S. VERMONT AVE
 TORRANCE, CA 90502

CITY OF LOS ANGELES
EROSION CONTROL PLAN
 FOR
AMAZON DCX7 TORRANCE
970 FRANCISCO STREET
LOS ANGELES

SHEET	6
OF	7
T.E. JOB No.	3852

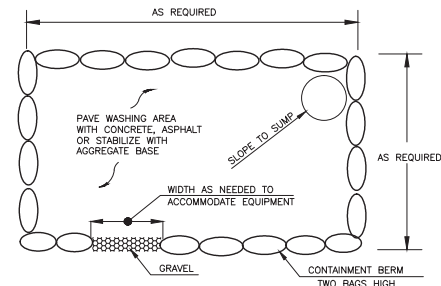
**EROSION AND SEDIMENT CONTROL PLAN (ESCP)
GENERAL NOTES:**

- IN CASE OF EMERGENCY, CALL AT RISK LEVEL 2 3 (CIRCLE ONE AS DETERMINED BY STATE GENERAL PERMIT FOR SITES GREATER THAN 1 ACRE)
- TOTAL DISTURBED AREA: XX.XX AC. WDD # GREATER THAN 1 ACRE
- A STAND-BY CREW FOR EMERGENCY WORK SHALL BE AVAILABLE AT ALL TIMES DURING THE RAINY SEASON (NOVEMBER 1 TO APRIL 15). NECESSARY MATERIALS SHALL BE AVAILABLE ON-SITE AND STOCKPILED AT CONVENIENT LOCATIONS TO FACILITATE RAPID CONSTRUCTION OF EMERGENCY DEVICES WHEN RAIN IS IMMINENT.
- EROSION CONTROL DEVICES SHOWN ON THIS PLAN MAY BE REMOVED WHEN APPROVED BY THE BUILDING OFFICIAL IF THE GRADING OPERATION HAS PROCEEDED TO THE POINT WHERE THEY ARE NO LONGER REQUIRED.
- GRADED AREAS ADJACENT TO FILL SLOPES LOCATED AT THE SITE PERIMETER MUST DRAIN AWAY FROM THE TOP OF SLOPE AT THE CONCLUSION OF EACH WORKING DAY. ALL LOOSE SOILS AND DEBRIS THAT MAY CREATE A POTENTIAL HAZARD TO OFF-SITE PROPERTY SHALL BE STABILIZED OR REMOVED FROM THE SITE ON A DAILY BASIS.
- ALL SILT AND DEBRIS SHALL BE REMOVED FROM ALL DEVICES WITHIN 24 HOURS AFTER EACH RAINSTORM AND BE DISPOSED OF PROPERLY.
- A GUARD SHALL BE POSTED ON THE SITE WHENEVER THE DEPTH OF WATER IN ANY DEVICE EXCEEDS TWO FEET. THE DEVICE SHALL BE DRAINED OR PUMPED DRY WITHIN 24 HOURS AFTER EACH RAINSTORM. PUMPING AND DRAINING OF ALL BASINS AND DRAINAGE DEVICES MUST COMPLY WITH THE APPROPRIATE BMP FOR DEWATERING OPERATIONS.
- THE PLACEMENT OF ADDITIONAL DEVICES TO REDUCE EROSION DAMAGE AND CONTAIN POLLUTANTS WITHIN THE SITE IS LEFT TO THE DISCRETION OF THE FIELD ENGINEER. ADDITIONAL DEVICES AS NEEDED SHALL BE INSTALLED TO RETAIN SEDIMENTS AND OTHER POLLUTANTS ON SITE.
- DESTILING BASINS MAY NOT BE REMOVED OR MADE INOPERABLE BETWEEN NOVEMBER 1 AND APRIL 15 OF THE FOLLOWING YEAR WITHOUT THE APPROVAL OF THE BUILDING OFFICIAL.
- STORM WATER POLLUTION CONTROL DEVICES ARE TO BE MODIFIED, AS NEEDED, AS THE PROJECT PROGRESSES. THE DESIGN AND PLACEMENT OF THESE DEVICES IS THE RESPONSIBILITY OF THE FIELD ENGINEER. PLANS REPRESENTING CHANGES MUST BE SUBMITTED FOR APPROVAL IF REQUESTED BY THE BUILDING OFFICIAL.
- EVERY EFFORT SHOULD BE MADE TO ELIMINATE THE DISCHARGE OF NON-STORM WATER FROM THE PROJECT SITES AT ALL TIMES.
- ERODED SEDIMENTS AND OTHER POLLUTANTS MUST BE RETAINED ON-SITE AND MAY NOT BE TRANSPORTED FROM THE SITE VIA SHEET FLOW, SWALES, AREA DRAINS, NATURAL DRAINAGE COURSES, OR WIND.
- STOCKPILES OF EARTH AND OTHER CONSTRUCTION-RELATED MATERIALS MUST BE PROTECTED FROM BEING TRANSPORTED FROM THE SITE BY THE FORCES OF WIND OR WATER.
- FUELS, OILS, SOLVENTS, AND OTHER TOXIC MATERIALS MUST BE STORED IN ACCORDANCE WITH THEIR LISTING AND ARE NOT TO CONTAMINATE THE SOILS AND SURFACE WATERS. ALL APPROVED STORAGE CONTAINERS ARE TO BE PROTECTED FROM THE WEATHER. SPILLS MUST BE CLEANED UP IMMEDIATELY AND DISPOSED OF IN A PROPER MANNER. SPILLS MAY NOT BE WASHED INTO THE DRAINAGE SYSTEM.
- EXCESS OR WASTE CONCRETE MAY NOT BE WASHED INTO THE PUBLIC WAY OR ANY OTHER DRAINAGE SYSTEM. PROVISIONS SHALL BE MADE TO RETAIN CONCRETE WASTES ON-SITE UNTIL THEY CAN BE DISPOSED OF AS SOLID WASTE.
- DEVELOPERS/CONTRACTORS ARE RESPONSIBLE TO INSPECT ALL EROSION CONTROL DEVICES AND BMPs ARE INSTALLED AND FUNCTIONING PROPERLY IF THERE IS A 50% OR GREATER PROBABILITY OF PREDICTED PRECIPITATION, AND AFTER ACTUAL PRECIPITATION. A CONSTRUCTION SITE INSPECTION CHECKLIST AND INSPECTION LOG SHALL BE MAINTAINED AT THE PROJECT SITE AT ALL TIMES AND AVAILABLE FOR REVIEW BY THE BUILDING OFFICIAL (COPIES OF THE SELF-INSPECTION CHECK LIST AND INSPECTION LOGS ARE AVAILABLE UPON REQUEST).
- TRASH AND CONSTRUCTION RELATED SOLID WASTES MUST BE DEPOSITED INTO A COVERED RECEPTACLE TO PREVENT CONTAMINATION OF RAINWATER AND DISPERSAL BY WIND.
- SEDIMENTS AND OTHER MATERIALS MAY NOT BE TPLATESED FROM THE SITE BY VEHICLE TRAFFIC. THE CONSTRUCTION ENTRANCE ROADWAYS MUST BE STABILIZED SO AS TO INHIBIT SEDIMENTS FROM BEING DEPOSITED INTO THE PUBLIC WAY. ACCIDENTAL DEPOSITIONS MUST BE SWEEPED UP IMMEDIATELY AND MAY NOT BE WASHED DOWN BY RAIN OR OTHER MEANS.
- ANY SLOPES WITH DISTURBED SOILS OR DENUDED OF VEGETATION MUST BE STABILIZED SO AS TO INHIBIT EROSION BY WIND AND WATER.
- AS THE ENGINEER/OSD OF RECORD, I HAVE SELECTED APPROPRIATE BMPs TO EFFECTIVELY MINIMIZE THE NEGATIVE IMPACTS OF THIS PROJECT'S CONSTRUCTION ACTIVITIES ON STORM WATER QUALITY. THE PROJECT OWNER AND CONTRACTOR ARE AWARE THAT THE SELECTED BMPs MUST BE INSTALLED, MONITORED, AND MAINTAINED TO ENSURE THEIR EFFECTIVENESS.

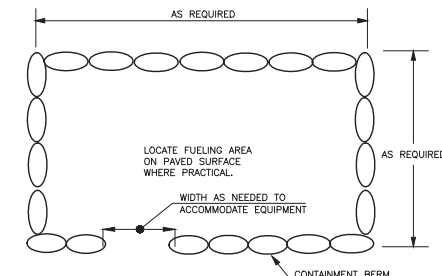


- NOTES**
- WIRE SHALL BE A MINIMUM OF 32" IN WIDTH AND SHALL HAVE A MINIMUM OF 8 LINE WIRES WITH 12" STAY SPACING.
 - FILTER FABRIC SHALL BE A MINIMUM OF 36" IN WIDTH AND SHALL BE FASTENED ADEQUATELY TO THE WIRE.
 - STEEL POST SHALL BE 5'-0" IN HEIGHT AND BE OF THE SELF-FASTENER ANGLE STEEL TYPE.
 - WOOD POST SHALL BE 6'-0" IN HEIGHT AND 3" IN DIAMETER.

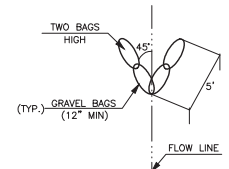
SILT FENCE DETAIL PER SE-1
N.T.S.



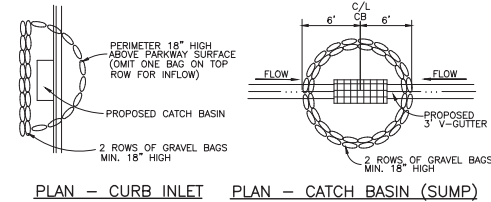
VEHICLE AND EQUIPMENT CLEANING PER NS-8
N.T.S.



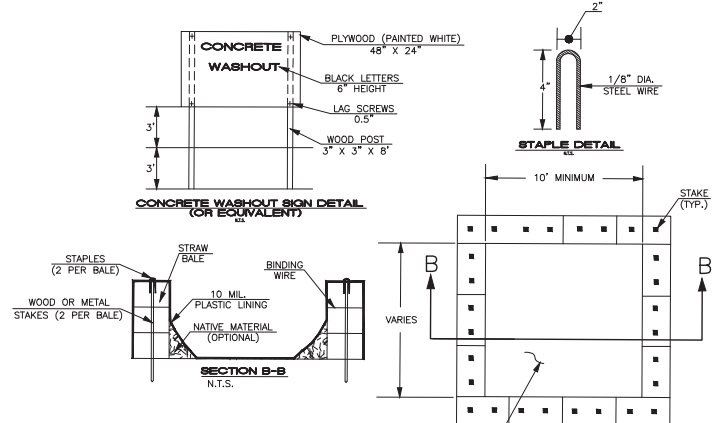
TYPICAL FUELING AREA PER NS-9
N.T.S.



CHECK DAM PER SE-4
N.T.S.

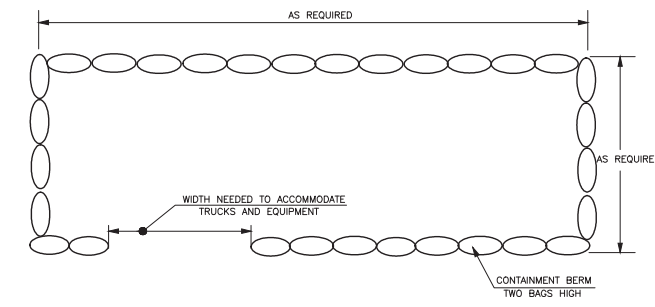


GRAVEL BAG DETAIL AT STORM DRAIN INLET PROTECTION PER SE-10
N.T.S.

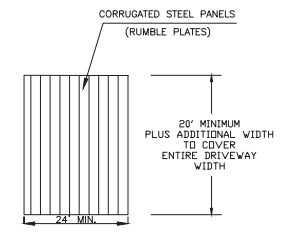


CONCRETE WASTE MANAGEMENT PER WM-8
N.T.S.

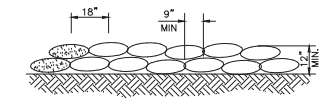
- NOTES:**
- ACTUAL LAYOUT DETERMINED IN THE FIELD.
 - THE CONCRETE WASHOUT SIGN SHALL BE INSTALLED WITHIN 30 FT. OF THE TEMPORARY CONCRETE WASHOUT FACILITY.



CONSTRUCTION WASTE STORAGE AREA AND CONSTRUCTION MATERIALS STORAGE AREA PER WM-5 AND WM-1
N.T.S.



STABILIZED CONSTRUCTION ENTRANCE/EXIT RUMBLE PLATES
N.T.S.



GRAVEL BAG BERM DETAIL 12' HIGH PER SE-6
N.T.S.

EROSION CONTROL BMPs	TEMPORARY TPLATING CONTROL BMPs
EC-1 SCHEDULING	TC-1 STABILIZED CONSTRUCTION ENTRANCE/EXIT
EC-2 PRESERVATION OF EXISTING VEGETATION	TC-2 STABILIZED CONSTRUCTION ROADWAY
EC-3 HYDRAULIC MULCH	TC-3 ENTRANCE/OUTLET TIRE WASH
EC-4 HYDROSEEDING	
EC-5 SOIL BINDERS	NON-STORMWATER MANAGEMENT BMPs
EC-6 STRAW MULCH	NS-1 WATER CONSERVATION PRACTICES
EC-7 GEOTEXTILES AND MATS	NS-2 DENATURING OPERATIONS
EC-8 WOOD MULCHING	NS-3 PAVING AND GRINDING OPERATIONS
EC-9 EARTH DIKES AND DRAINAGE	NS-4 TEMPORARY STREAM CROSSING
EC-10 VELOCITY DISSIPATION DEVICES SWALES	NS-5 CLEAR WATER DIVERSION
EC-11 SLOPE DRAIN STABILIZATION	NS-6 ILLICIT CONNECTION/DISCHARGE
EC-12 STREAMBANK STABILIZATION	NS-7 POTABLE WATER/IRRIGATION
EC-13 RESERVED	NS-8 VEHICLE AND EQUIPMENT CLEANING
EC-14 COMPOST BLANKET	NS-9 VEHICLE AND EQUIPMENT FUELING
EC-15 SOIL PREPARATION/ROUGHENING	NS-10 VEHICLE AND EQUIPMENT MAINTENANCE
EC-16 NON-VEGETATIVE STABILIZATION	NS-11 PILE DRIVING OPERATIONS
	NS-12 CONCRETE CURING
	NS-13 CONCRETE FINISHING
	NS-14 MATERIAL AND EQUIPMENT USE
	NS-15 DEMOLITION ADJACENT TO WATER
	NS-16 TEMPORARY BATCH PLANTS
	WASTE & MATERIAL MANAGEMENT BMPs
	WM-1 MATERIAL DELIVERY AND STORAGE
	WM-2 MATERIAL USE
	WM-3 STOCKPILE MANAGEMENT
	WM-4 SPILL PREVENTION AND CONTROL
	WM-5 SOLID WASTE MANAGEMENT
	WM-6 HAZARDOUS WASTE MANAGEMENT
	WM-7 CONTAMINATED SOIL MANAGEMENT
	WM-8 CONCRETE WASTE MANAGEMENT
	WM-9 SANITARY/SEPTIC WASTE MANAGEMENT
	WM-10 LIQUID WASTE MANAGEMENT
	WIND EROSION CONTROL BMPs
	WE-1 WIND EROSION CONTROL



BENCHMARK:
CITY OF LOS ANGELES BENCHMARK NO. "21-02291"
LEAD AND TAG IN SOUTHEAST CURB RETURN KNOX STREET AND
NORMANDIE AVENUE; 13.0 FEET NORTH OF BOR SOUTH OF KNOX STREET
ELEVATION = 49.76 FEET (NAVD '88 / 2014 ADJ.)

SOILS ENGINEER:

REV.	DESCRIPTION	DATE	APPR'D.



PLANS PREPARED UNDER THE SUPERVISION OF
Reinhard Stenzel
DATE: 03/05/20
R.C.E. 56155 - EXP. 12-31-20

ENGINEER:
Thienes Engineering, Inc.
CIVIL ENGINEERING & LAND SURVEYING
14349 FIRESTONE BOULEVARD
LA MIRADA, CALIFORNIA 90638
PH: (714) 521-4811 FAX: (714) 521-4173

OWNER:
COGNAC PACIFIC GATEWAY LLC
19701 S. VERMONT AVE
TORRANCE, CA 90502

CITY OF LOS ANGELES
EROSION CONTROL DETAILS
FOR
AMAZON DCX7 TORRANCE
870 FRANCISCO STREET
LOS ANGELES

SHEET 7 OF 7
T.E. JOB No. 3852